



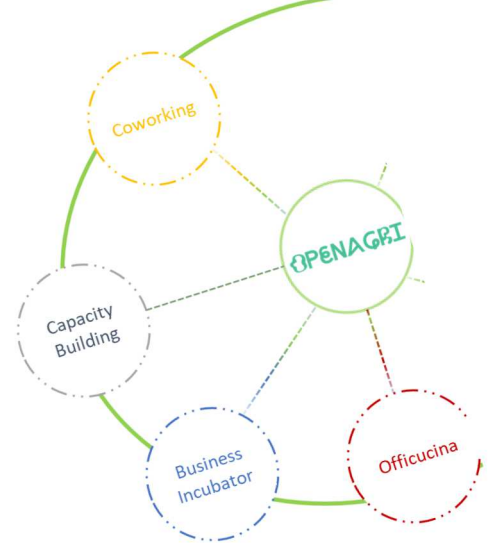
OPENAGRI

Zoom-in

March 2018

Experimentation Laboratory in Urban Agriculture

The Experimentation Laboratory (Lab) explores innovative techniques in urban agriculture (from production to logistic, from Internet of Food to sharing economy) and engage a series of partners on making the best use of public owned **33 hectares plot of land surrounding the south Milan Parco Sud boundaries**. The Lab is primarily set to promote innovative techniques and approaches in peri-urban agriculture, educational and training initiatives and awareness campaigns, with the goal to create new job opportunities and to revitalise a fringe area of the City.



The **process to find innovative projects**, agriculture entrepreneurs, companies and/or startups and other organized parties to the Lab was launched in August 2017. A **two-stage public open call** (Phase I and Phase II) was launched for projects that understands agriculture as a sustainable/biological system as a motor of eco-system services, which generate new knowledge and skills, and which thereby act as an impetus for innovation and are functional and/or integrated **within the value chain and agri-food system** (production, processing, distribution, consumption, waste management) in a circularity.

30 Sept 2017: Phase I: 50 project proposals

15 Oct 2017: Phase I: Selection of 27 projects proposals to phase II

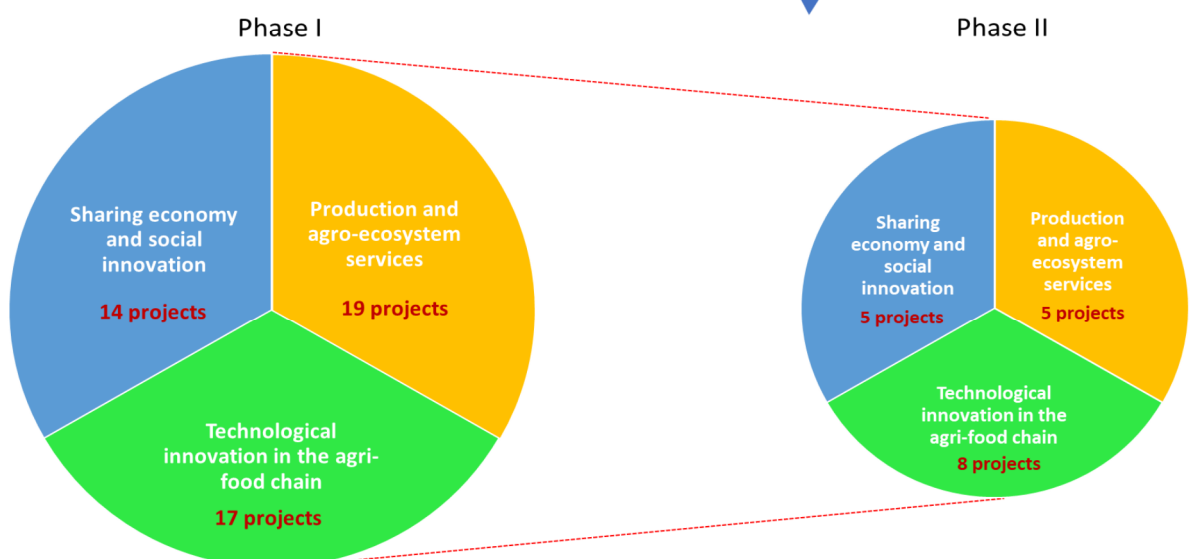
17 Nov 2017: Phase II: workshop with the 27 proposals admitted to phase II of the call.

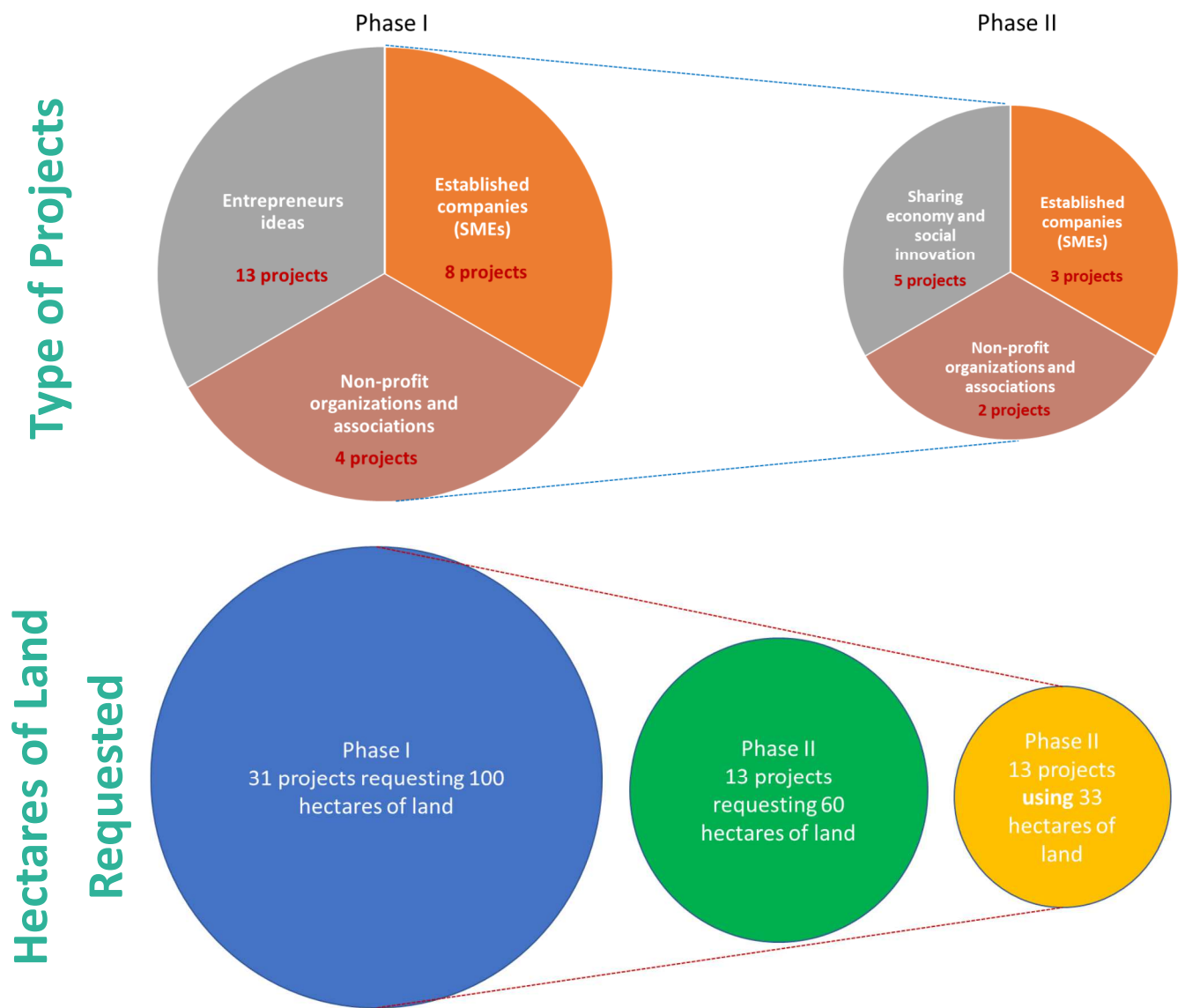
22 Dec 2017: Phase II: 18 projects admitted to the final phase.

17 Jan 2018: workshop for launch of training, acceleration and pre-incubation activities by the partners

Feb – Mar 2018: Kick off the acceleration program

3 Thematic Cluster



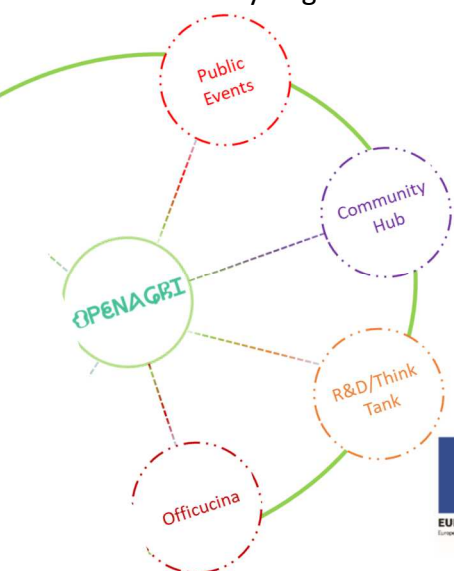


Analysing the selected innovative projects and grouping them accordingly to thematic clusters, type of project and land needs, the OpenAgri team is aware that the main challenge for the Lab is to promote **projects integration**, in a vertical and horizontal line.

The **vertical integration** has been implemented with the focus to make the projects more place-based, linking them to the territory of Corvetto-Porto di Mare-Chiaravalle but also to Milan area and Lombardy Region.

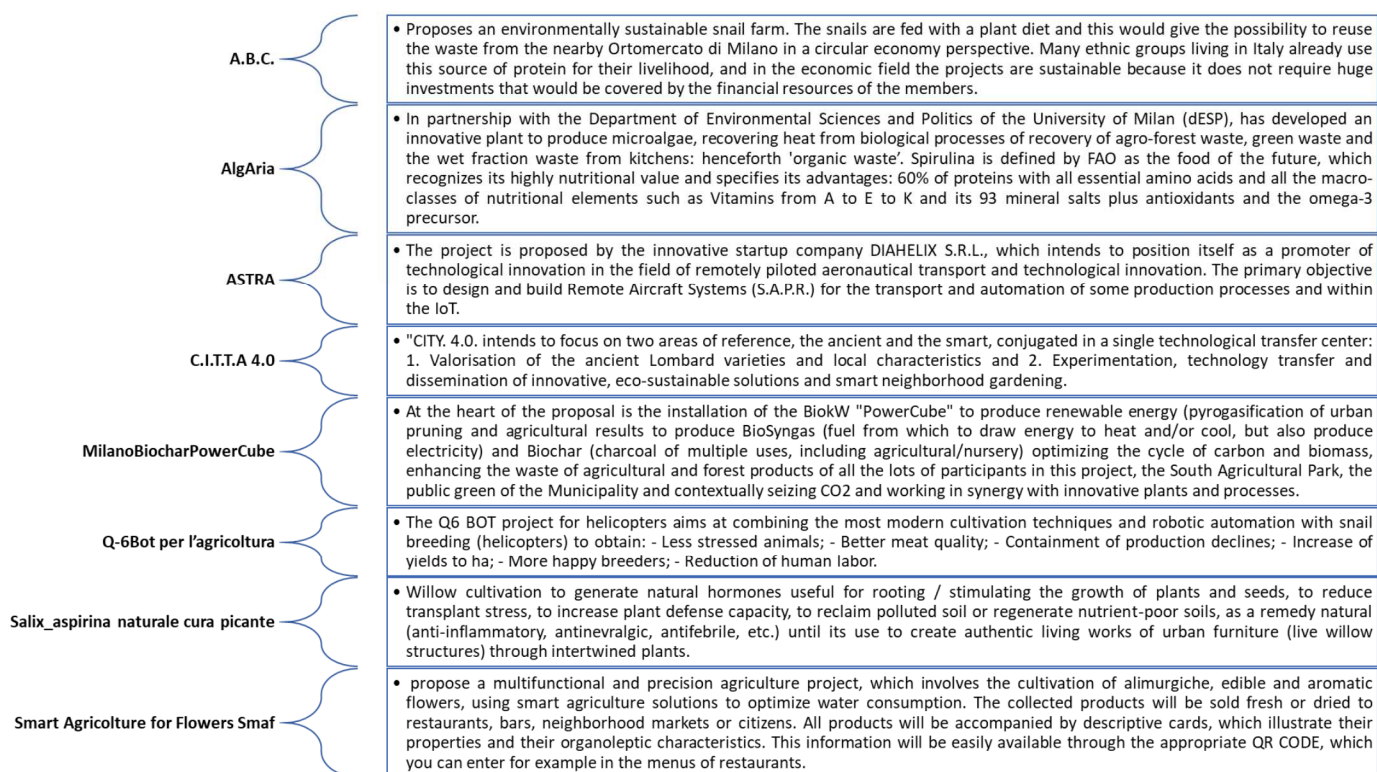
The **horizontal integration** has been implemented at different scales: by one side linking them to a wide and active innovation system of Milan city and by finding and stimulating synergies between the projects. Most of them shows interdependencies on the agri-food supply chain and this open's a wide range of innovation activities that can be developed.

Taking this in consideration, the acceleration program has been **co-designed with the selected projects** in terms of pre-incubation activities, advanced training, mentorship and strategic networking, depending on topics and degree of maturity of each project.

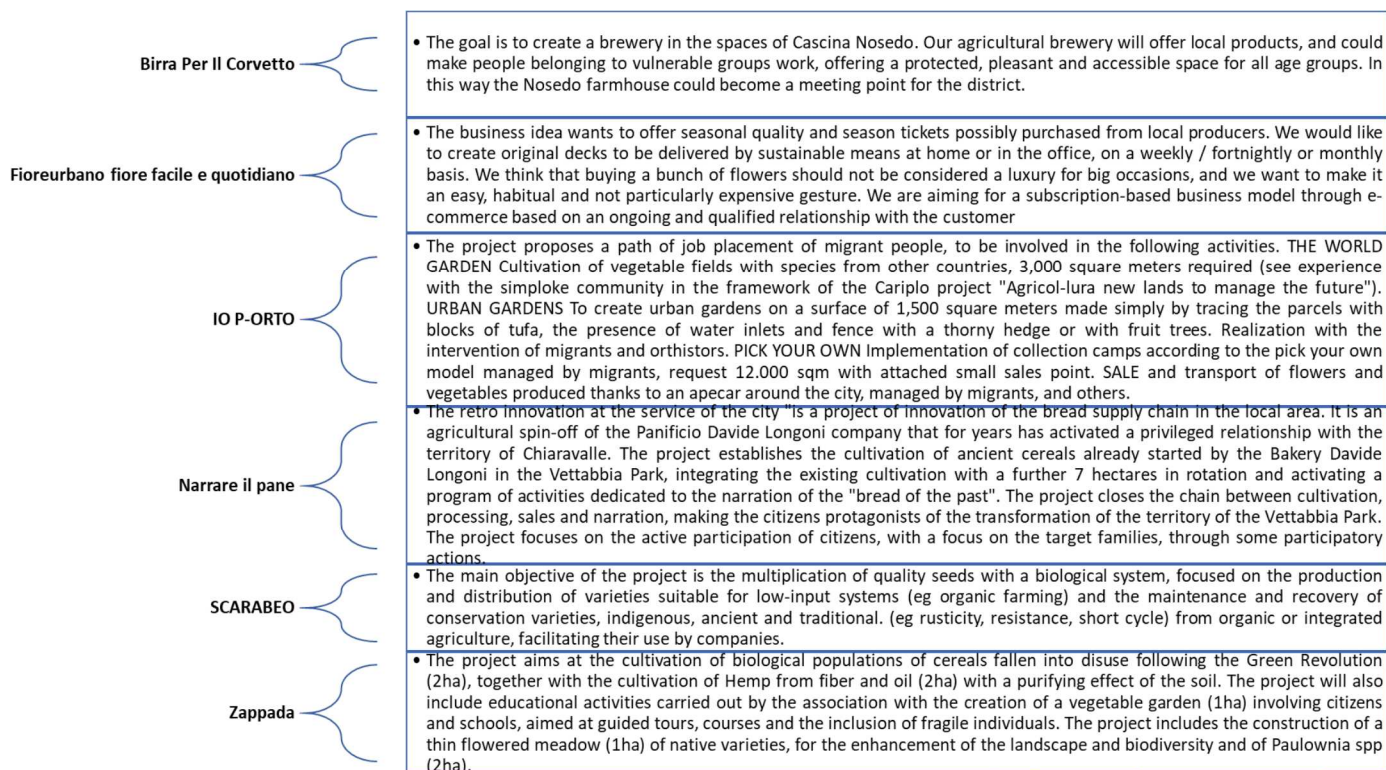


The OpenAgri projects selected for the Experimental Laboratory

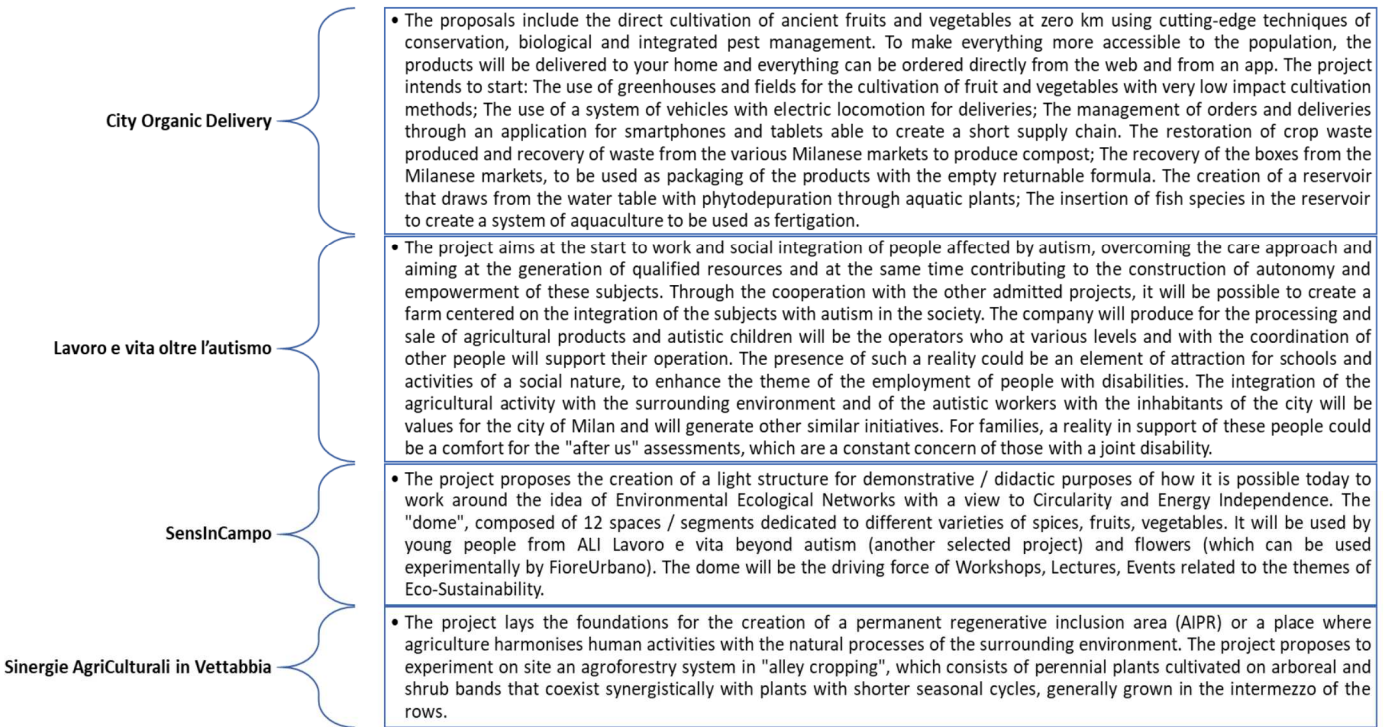
Technological Innovation Projects



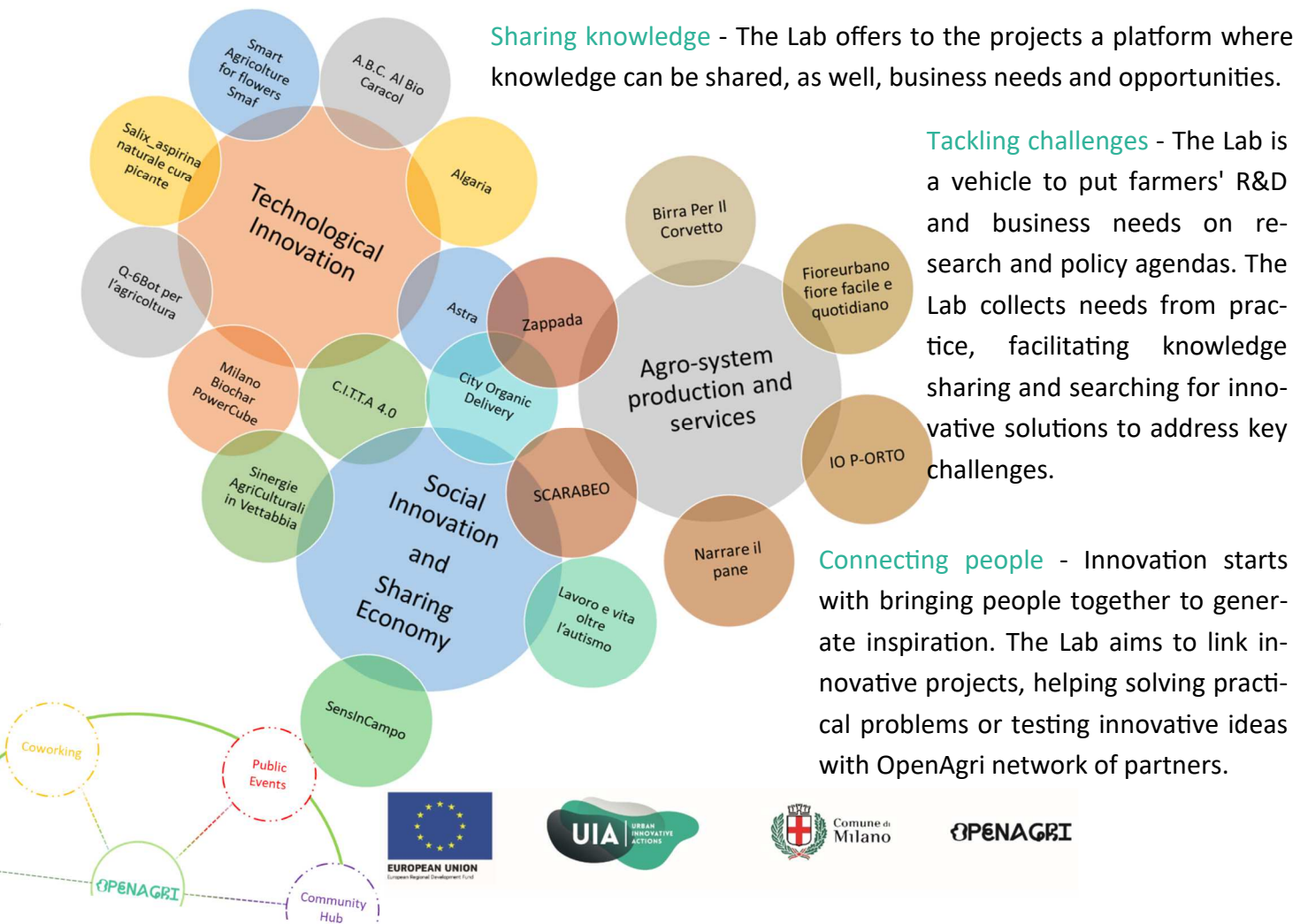
Agro-system production and services Projects



Social Innovation and Sharing Economy Projects



Many of the projects have R&D and business connections in multiple areas. The Experimentation Laboratory acts as a mediator within the selected projects, enhancing communication and business cooperation between innovation actors and it organises its work within three areas of activity:



Connecting people - Innovation starts with bringing people together to generate inspiration. The Lab aims to link innovative projects, helping solving practical problems or testing innovative ideas with OpenAgri network of partners.

The Experimentation Laboratory in Urban Agriculture is the heart of OpenAgri project, in which infrastructures and services are jointly and dynamically discovered by providers and users alike, and to create open communities of farmers, advisors, researchers, businesses, and others, building new collaborations and networks so cities can understand innovation, innovators can understand cities, citizens can become effectively engaged and users can become content providers, service producers and deliverers.

As such, the open innovation hub envisaged by OpenAgri should become a specific urban setting, or an “innovation playground”, which combines innovation and social and commercial activities, to enable open innovation and showcase the benefits that may be reaped by localities through growing smarter and in a more sustainable manner.

More about the Experimentation Laboratory in Urban Agriculture will be released in the forthcoming publications.

Urban Innovative Actions (UIA) is an Initiative of the European Union that provides urban areas throughout Europe with resources to test new and unproven solutions to address urban challenges. Based on article 8 of ERDF, the Initiative has a total ERDF budget of EUR 372 million for 2014-2020.

UIA projects will produce a wealth of knowledge stemming from the implementation of the innovative solutions for sustainable urban development that are of interest for city practitioners and stakeholders across the EU. This journal is a paper written by a UIA Expert that captures and disseminates the lessons learnt from the project implementation and the good practices identified. The journals will be structured around the main challenges of implementation identified and faced at local level by UIA projects. They will be published on a regular basis on the UIA website.

Author: Miguel Sousa

UIA Expert

Miguel.sousa@inovamais.pt

March 2018

Urban Innovative Actions

Les Arcuriales
45D rue de Tournai
F - 59000 Lille

+33 (0)3 61 76 59 34
info@uia-initiative.eu
www.uia-initiative.eu

Follow us on **twitter**
@UIA_Initiative
and on **Facebook**.

The content of this Zoom-in does not reflect the official opinion of the Urban Innovative Actions Initiative. Responsibility for the information and views expressed in the journal lies entirely with the author.

